



**TIMELESS TIMBER**

Your home to sustainably sourced timber

# TIMELESS TIMBER

---

## CATALOGUE



**LOCATION**

Opposite Makongeni Mosque,  
Off Jogoo Road



**PHONE**

+254 768 097 383



**EMAIL**

[info@timelesstimber.co.ke](mailto:info@timelesstimber.co.ke)



The background of the entire page is a photograph of the interior of a wooden structure, possibly a tent or a small cabin. The floor is made of wide wooden planks, and the walls are also made of wood. Large windows or openings in the structure look out onto a lush green forest. A large green rectangular overlay covers the left side of the image, containing the text. In the bottom right corner, there is a decorative graphic consisting of several thin, curved green lines that sweep upwards and to the right.

## *YOUR HOME FOR SUSTAINABLY SOURCED EXOTIC HARDWOODS*

At Timeless Timber, we take pride in being your trusted supplier of exotic hardwoods, sourced directly from our sustainable plantations across East and Central Africa. We are a vertically integrated timber products company, planting, growing, and harvesting trees, to manufacture sustainable timber products.

We therefore have total control over our supply chain from seed to tree and then from log to finished timber product.





## Our Mission

To foster a sustainable future through responsible timber sourcing and production. We are dedicated to sourcing exclusively from legally managed sustainable forests, upholding the highest quality standards in our processes. We believe in enriching the environment as we conduct our business, ensuring that every step we take contributes to a greener and more sustainable world

## Our Values



### **Sustainability:**

Commitment to environmental stewardship is central to our operations. We ensure that our timber is sourced from well-managed, legal, and sustainable forests. This value drives our efforts to minimize ecological impact and promote forest regeneration through reforestation and afforestation initiatives.



### **Quality:**

We adhere to the highest standards in every step of our production process, ensuring that our timber products are not only sustainable but also of superior quality. This dedication to quality helps us meet and exceed customer expectations consistently



### **Transparency:**

We prioritize transparency in our supply chain, providing full traceability of our timber products. This value ensures our customers can trust the origins and sustainability of the wood they purchase, supported by certifications such as FSC and PEFC.



### **Innovation:**

Embracing modern technologies and innovative practices is key to our approach. We utilize advanced tools such as GIS for efficient forest management and invest in eco-friendly logging equipment to reduce our environmental footprint.



### **Community Engagement:**

We believe in supporting the communities involved in our supply chain. This includes providing fair wages, supporting local economies, and ensuring that our practices benefit both people and the planet. We work with local and international organizations to promote sustainable forestry and enhance the well-being of forest-dependent communities.

# Our Timber Species and Sourcing

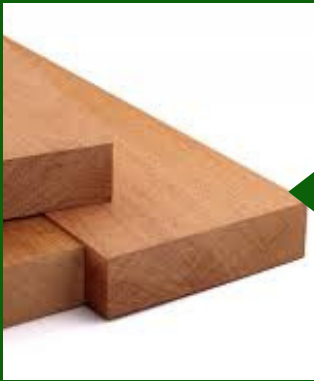


## TEAK (TECTONA GRANDIS)

Genuine Teak is globally renowned for its light to medium brown heartwood, which can range from muted gold to pale red, darkening with age. Its sapwood is pale white, off-white, or pale yellowish brown. Despite its modest appearance, Teak's popularity stems from its exceptional toughness, resistance to rot, and durability.

→ **Country of Origin:** South Sudan/DR. Congo

→ **Sizes available:** 100mm-200mm×50mm- 150mm x 2100mm-2500mm



## AFRICAN MAHOGANY

Depending on its origin, growth conditions, and specific strain ("African Mahogany" encompasses four different Khaya species). Its color can range from a pale pink or muted orange to a somewhat darker reddish - or golden-brown. African Mahogany is highly valued for its attractive grain patterns and ease of working.

→ **Country of Origin:** South Sudan/DR. Congo

→ **Sizes available:** 200mm-300mm×50mm -100mm x 2500mm-5500mm



## IROKO/MVULE

Iroko is a tough, durable wood that has been traditionally used in a multitude of applications in its native Africa. Its golden to medium brown colour, coarse texture and interlocked grains give it an appearance very similar to that of Teak. Although it is significantly less dense, it has been utilized in Africa in many of the same functions that Teak has in other parts of the world.

→ **Country of Origin:** South Sudan/DR. Congo

→ **Sizes available:** 100mm-300mm×50mm- 150mm×2100mm-2500mm



## AFROMOSIA

Afrormosia is a handsome, rot and bug resistant, extremely durable wood that has been used as a substitute for Teak (Tectona grandis), thus earning its nickname, "African Teak". While having a similar look, it also has working and mechanical properties that mimic Teak, whilst having none of its oiliness.

→ **Country of Origin:** South Sudan/DR. Congo

→ **Sizes available:** 100mm-200mm×50mm- 150mm×2100mm-2500mm



## PADAUK

African Padauk is a very strong, stable hardwood. It is known for its typically robust reddish-brown coloration (which darkens with age), although color variations can occur, ranging from deep burgundy to bright orange- red. This striking wood is prized for its exceptional durability and resistance to decay.

→ **Country of Origin:** South Sudan/DR. Congo

→ **Sizes available:** 100mm-200mm×50mm- 150mm×2100mm-2500mm



# Our Commitment to Sustainability



At Timeless Timber, we believe in harnessing the beauty of nature while preserving it for future generations. Our commitment to sustainability is deeply ingrained in every aspect of our business.

## Sourcing Practices

We source our timber from well-managed, legal, and sustainable forests, primarily in Uganda, the Democratic Republic of Congo (DRC), and South Sudan. Our timber species, including Teak, Mahogany, Padauk, Afromosia, and Iroko, are harvested with strict adherence to sustainable forestry principles. We implement selective logging practices and support reforestation initiatives to maintain the ecological balance and promote biodiversity. Our kiln drying process further enhances the sustainability of our products by increasing their durability and reducing waste.

## Partnerships with Sustainable Forestry Organizations:

We collaborate closely with internationally recognized certification bodies such as the Uganda Tree Growers Association and the World Green Building Council. These partnerships ensure that our timber meets rigorous environmental and social standards, providing our customers with the assurance that their materials are sourced responsibly.

## Traceability and Transparency:

Transparency is a cornerstone of our sourcing practices. We utilize advanced tracking systems to provide full traceability of our timber, from the forest to the final product. Customers can verify the origin and sustainability of their timber, ensuring that every piece of wood aligns with their environmental values and project requirements.



Reduced Carbon Footprint

Resource Efficiency

Longevity and Durability

Conservation of Forests

Healthier Indoor Environments

Energy Efficiency



## Products and Applications





## Rough Sawn Beams (Green and Kiln Dried)

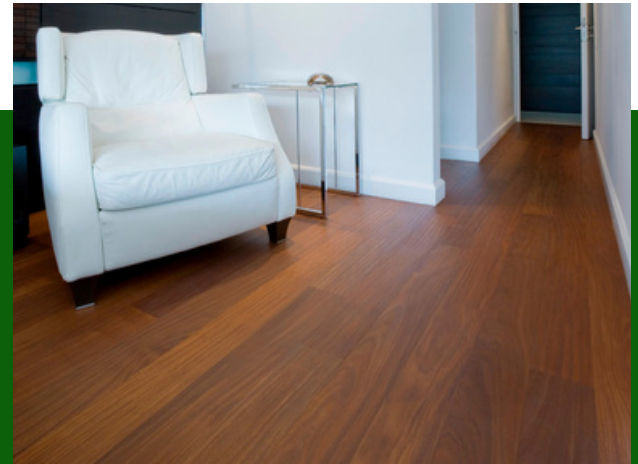


## Rough Sawn Planks (Green and Kiln Dried)





## Flooring Boards



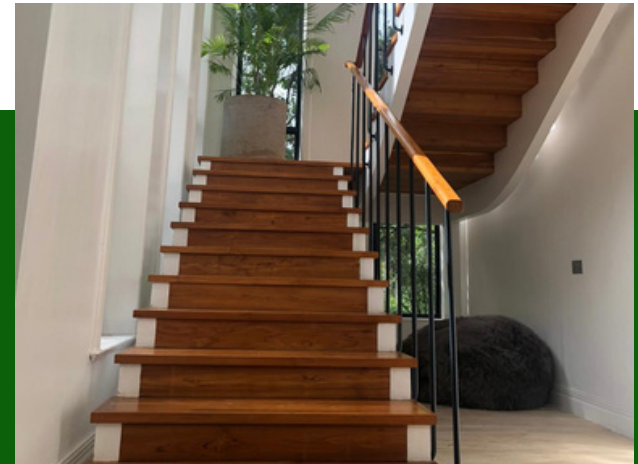
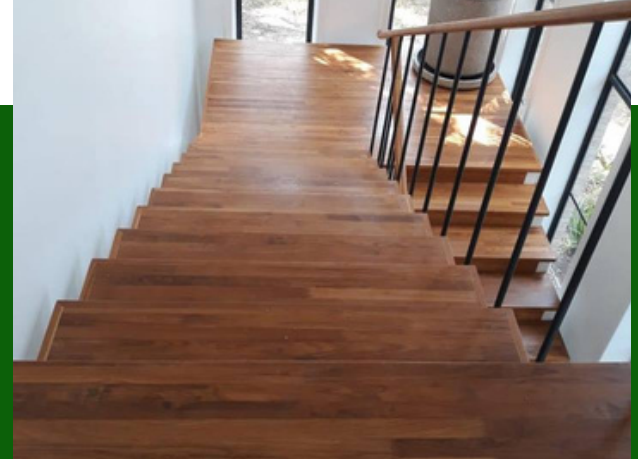


## Decking Boards





## Staircases





## Interior and Exterior Doors





**[WWW.TIMELESSTIMBER.CO.KE](http://WWW.TIMELESSTIMBER.CO.KE)**

*Your Home for Sustainably Sourced Exotic Hardwoods*



**LOCATION**

Opposite Makongeni Mosque,  
Off Jogoo Road



**PHONE**

+254 768 097 383



**EMAIL**

[info@timelesstimber.co.ke](mailto:info@timelesstimber.co.ke)